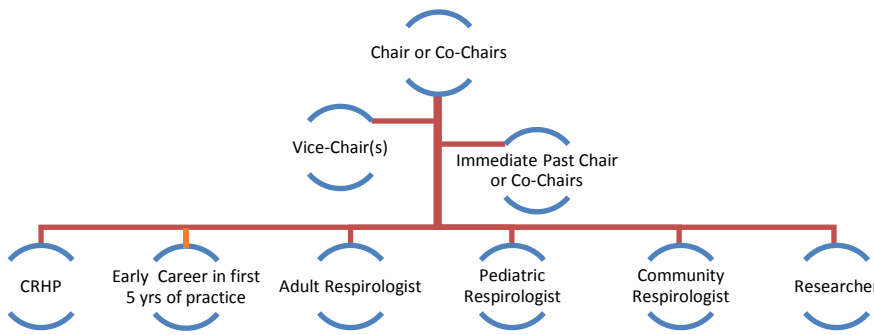


Assembly Steering Committee Composition



The goal of the revised Assembly Model is to increase the opportunities for the input and engagement of CTS members in the development and implementation of CTS’ strategic directions and overall impact.

Terms: Chair (or Co-Chairs), Vice-Chair, Early Career, Community Respirologist and Researcher representatives will be appointed by the CTS Executive during the transition phase scheduled over the next two years. Once established, these representatives will be elected by the CTS membership. The Chair and Vice Chair will serve two-year terms and 1 year terms will be served by the other Steering Committee members including the Past Chair. The CRHP and Pediatric Respirologist members will be identified and appointed by their respective Councils.

A CTS Assembly Steering Committee is NOT A GUIDELINE PANEL.

The Steering Committee oversees and supports the activities of an Assembly and will establish guideline panels with the required methodology and guideline development expertise as well as some working groups to advance the work and the strategic directions of the Society. A member of a Steering Committee can participate on a guideline panel or working group.

The Assembly Steering Committee will:

- Host an annual meeting to provide updates and gather input from CTS members for the development of a work plan.
- Prioritize proposed activities, develop a work plan and receive the necessary approvals from CTS Standing Committees and the CTS Executive regarding allocation of resources.
- Post meeting minutes and annual work plan in the designated Assembly workspace available in the CTS member portal.
- Convene by phone or webinar to monitor progress and to receive updates from guideline panels and/or working groups.
- Prepare an annual report for the CTS Board of Directors and CTS membership.

CTS Assemblies

A CTS member can be part of a primary Assembly and up to two secondary assemblies.

Asthma	Focus on diagnosis, evaluation and pharmacological and non-pharmacological management of patients with asthma and severe asthma.
CHEST Procedures & Oncology	Focus on invasive procedures performed by chest physicians and some aspects of thoracic cancer including screening and diagnosing.
COPD	Focus on prevention, diagnosis, evaluation and pharmacological and non-pharmacological management of patients with COPD.
Environmental, Occupational & Population Health	Focus on the impact of environmental and occupational exposures on lung health and to promote the advancement of patient care and public health in order to reduce the incidence of lung disease and other conditions attributable to toxic inhalation exposures.
Home Mechanical Ventilation	Focus on management of patients and to promote knowledge and education of clinicians, caregivers, and patients on the long-term respiratory care of individuals with neuromuscular and other conditions and individuals requiring home-based mechanical ventilation to maximize their QoL and home-based living.
Interstitial Lung Disease	Focus on diagnosis, evaluation, and pharmacological and non-pharmacological management of patients with ILD.
Physiology & Imaging	Focus on increasing understanding of pulmonary physiology & function as well as imaging and incorporating that knowledge into clinical practice.
Pulmonary Vascular Disease	Focus on pathophysiology, prevention, diagnosis, and treatment of pulmonary vascular diseases and to achieve the best possible patient-focused care through advancement of education and research.
Respiratory Infections and Bronchiectasis	Covers all issues of pulmonary and respiratory infections with a strong focus on bronchiectasis, tuberculosis and non-tuberculous mycobacteria.
Sleep Disordered Breathing	Focus on the diagnosis, causes, consequences and clinical management of sleep disordered breathing.